



Plasmatron™

Waste Energy Recovery System (WERS™)

Our unique **Waste Energy Recovery System, (WERS™)**, utilizes 4 unique technologies to form the most comprehensive Waste Management System on the planet. **WERS™** produces energy, syn-fuels, carbon black and inert ash from sustainable resources. It focuses on providing solutions for waste management, waste disposal and waste recycling. It helps in reducing waste to landfill by up to 95% in an environment friendly manner.

The large **WERS™** facility consists of a 3-stage process which utilizes advanced technologies to achieve the end-product. That product is electricity, syn-fuel, inert ash and carbon black. And it does all this while being 100% emissions free, self-sustaining and has an incredibly small footprint.

WERS™ is **NOT** an incinerator.

WERS will process **everything** included in Municipal Solid Waste

WERS requires **NO** pre-sorting of waste including plastics, organics, medical, etc

Advantages of the **Plasmatron™**

- **Portability/Size**
- **Variable Sizes**
- **Significantly Lower Cost**
- **No requirement for external source of Power**
- **Full Automation**
- **Carbon-Free Electricity (WTE)**
- **Zero-Emission/Carbon-Free**
- **No Pre- sorting of any waste streams**
- **Will process all plastics, tyres, organics, building waste, etc**
- **Small Footprint**
- **Low Temp**

The 4 unique technologies and stage processes are:

- **Intake & Reduction** – Uses the **Vortex/Revolution™ Waste Grinder** which is a high speed, vertical gyroscopic attrition mill that employs a controlled, segmented vortex air stream identical to that of a tornado, to process, homogenize, de-odorize, remove excess moisture, and reduce particle size in all waste streams.



- **Processing** – The **Plasmatron™** (The heart of the system), a waste management product that uses low level Plasma Heat Technology which excludes the use of any electricity, oil or fuel. It is also extremely mobile and removes most of the need for land filling. Furthermore, it does not require any segregation and has an extremely low maintenance cost.

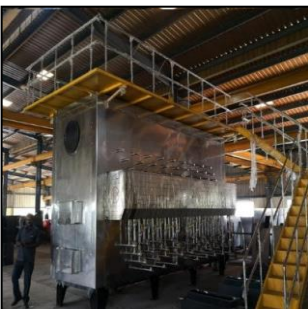
Plasmatron Output is energy, syn-oil as a pre-cursor feedstock to the FRU (below) ceramic ash.

- The machine has been patented in 151 countries with 10 trademarks. Technologies trademarked also include Programmed Oxygenated Plasma State™ (POPS™), Ionized Oxygen Plasma™ (IO2P™) and Tesla Flux Vortex™ (TFV™).
- **Fuel Refining** – By combining the process of fractionation of the syn- crude from the Plasmatron and utilizing the ideas of the Fischer-Tropsch process, combined with our patented process, re-combine hydrocarbon molecules to produce the end product (diesel, jet fuel, LPG etc). A by-product of high-quality carbon black (heavily used in Petrochemical facilities, water filtration and tire manufacturers) is also achieved which can be sold for an attractive ROI.



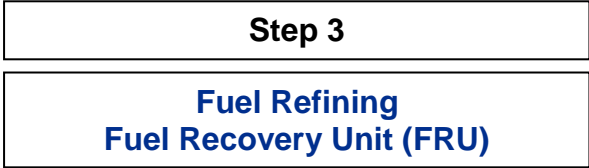
Step 1

**Intake & Reduction
Vortex/Revolution™ Waste Grinder**



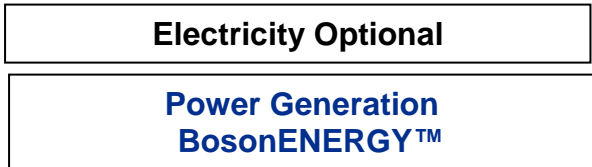
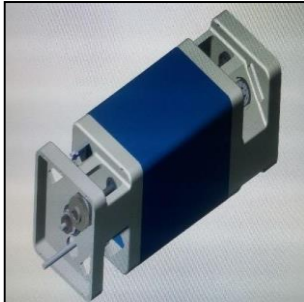
Step 2

**Processing
Plasmatron™**



OPTIONAL

Power Generation – BosonENERGY™ generator which generates power by tapping baryonic matter energy. The process involves using a field of permanent magnets which have a life of 150 years. The key to **BosonENERGY™** generator is that it **DOES NOT** involve any looping mechanism



ZERO%
EMISSION



Synthetic
Fuel



Continuous
Operations



Highly
Customizable



Renewable
Energy



Clean
Water